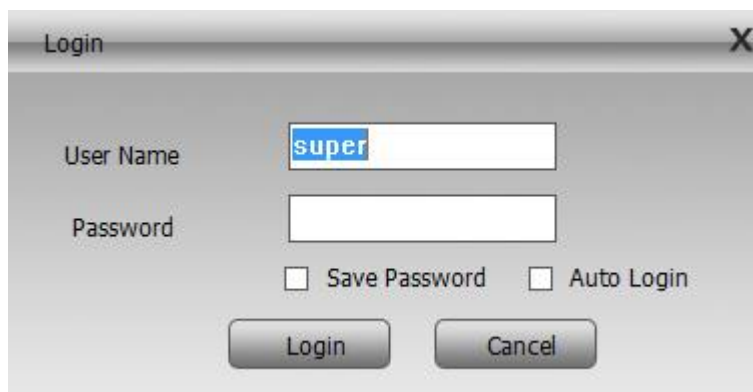


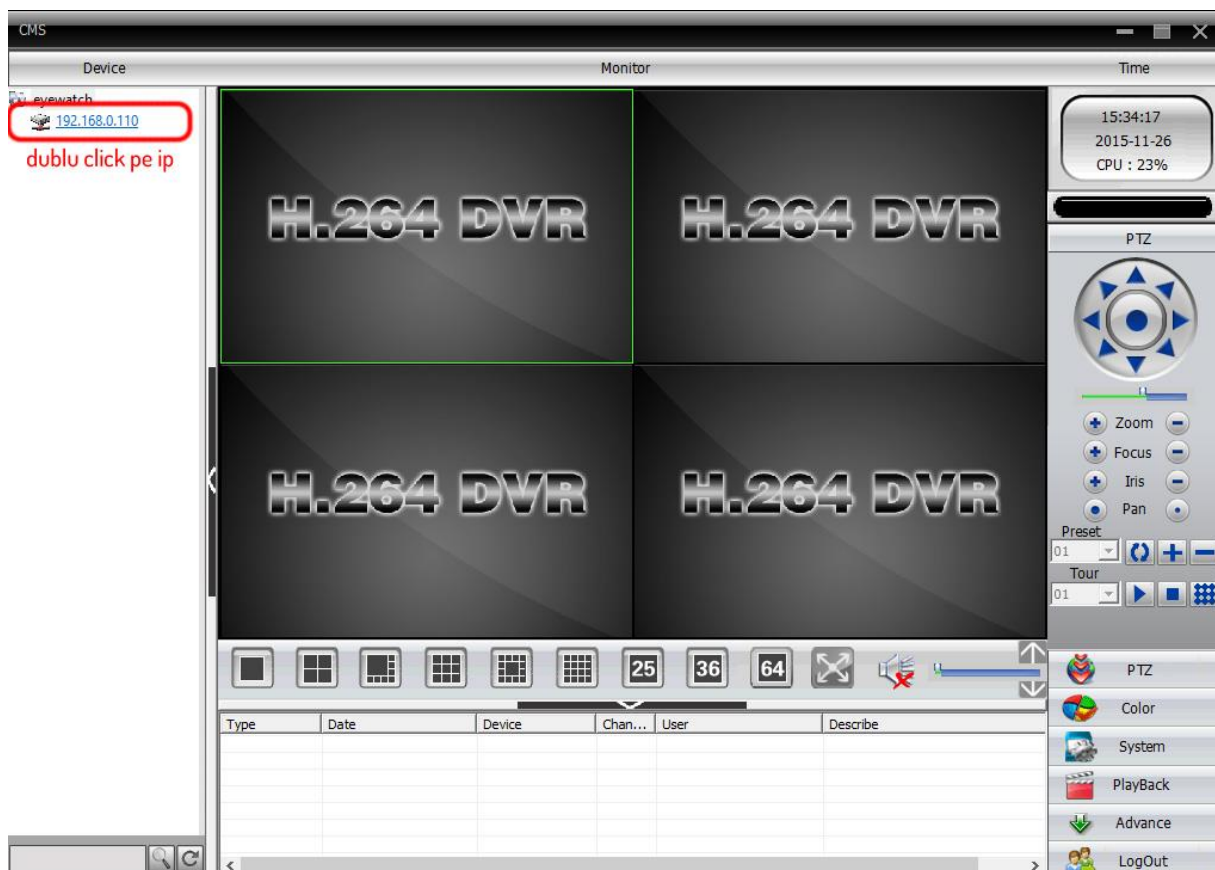
Salut! In acest articol iti vom arata cum sa setezi camera de supraveghere in modul wireless. Mai intai fii sigur ca respecti pasii de jos.

1. Conecteaza camera la priza (foloseste alimentatorul de 12V).
2. la un cablu de retea si leaga camera la router (pe unul din porturile LAN).
3. La acelasi router este bine sa ai conectat un pc sau laptop.
4. Softul CMS trebuie sa fie instalat in PC inainte de a continua.

In mod normal programul vine fara parola asa ca te poti loga direct



A screenshot of a 'Login' dialog box. It has a title bar with 'Login' and a close button. The dialog contains two input fields: 'User Name' with the text 'super' and 'Password' which is empty. Below the fields are two checkboxes: 'Save Password' and 'Auto Login', both of which are unchecked. At the bottom are two buttons: 'Login' and 'Cancel'.



A screenshot of the CMS (Central Monitoring System) interface. The window title is 'CMS'. The interface is divided into several sections:

- Device:** A list of devices with 'eyewatch' and '192.168.0.110' visible. A red box highlights the IP address with the text 'dublu click pe ip' below it.
- Monitor:** A 2x2 grid of camera feeds, each displaying 'H.264 DVR'.
- Time:** A box showing the current time '15:34:17', date '2015-11-26', and CPU usage 'CPU : 23%'.
- PTZ:** A control panel with a directional pad and buttons for 'Zoom', 'Focus', 'Iris', and 'Pan'.
- Preset/Tour:** Controls for 'Preset' (01) and 'Tour' (01).
- Bottom Panel:** A toolbar with icons for camera views (1, 4, 9, 16, 25, 36, 64) and a table with columns: Type, Date, Device, Chan..., User, Describe.
- Right Sidebar:** A vertical menu with icons and labels for 'PTZ', 'Color', 'System', 'PlayBack', 'Advance', and 'LogOut'.

CMS

Device Monitor Time

15:36:49
2015-11-26
CPU : 19%

PTZ

Zoom Focus Iris Pan

Preset 01 Tour 01

PTZ Color System PlayBack Advance LogOut

192.168.0.101
CAM01

click dreapta pe ip

Connect all video(Main Stream)
Connect all video(Extra Stream)
Disconnect all video
Device config
Refresh channel name
Sync time with PC
Rename

click pe "device config"

H.264 DVR H.264 DVR

H.264 DVR H.264 DVR

Type	Date	Device	Chan...	User	Describe
Video	2015-11-26 15:36:08	192.168.0.110	1	admin	Connect successful

CMS

Device Monitor Time

15:38:58
2015-11-26
CPU : 9%

System

Device Manager Local Config Remote Config Account Local Log

PTZ Color System PlayBack Advance LogOut

eyewatch 192.168.0.110 CAM01

Device Config

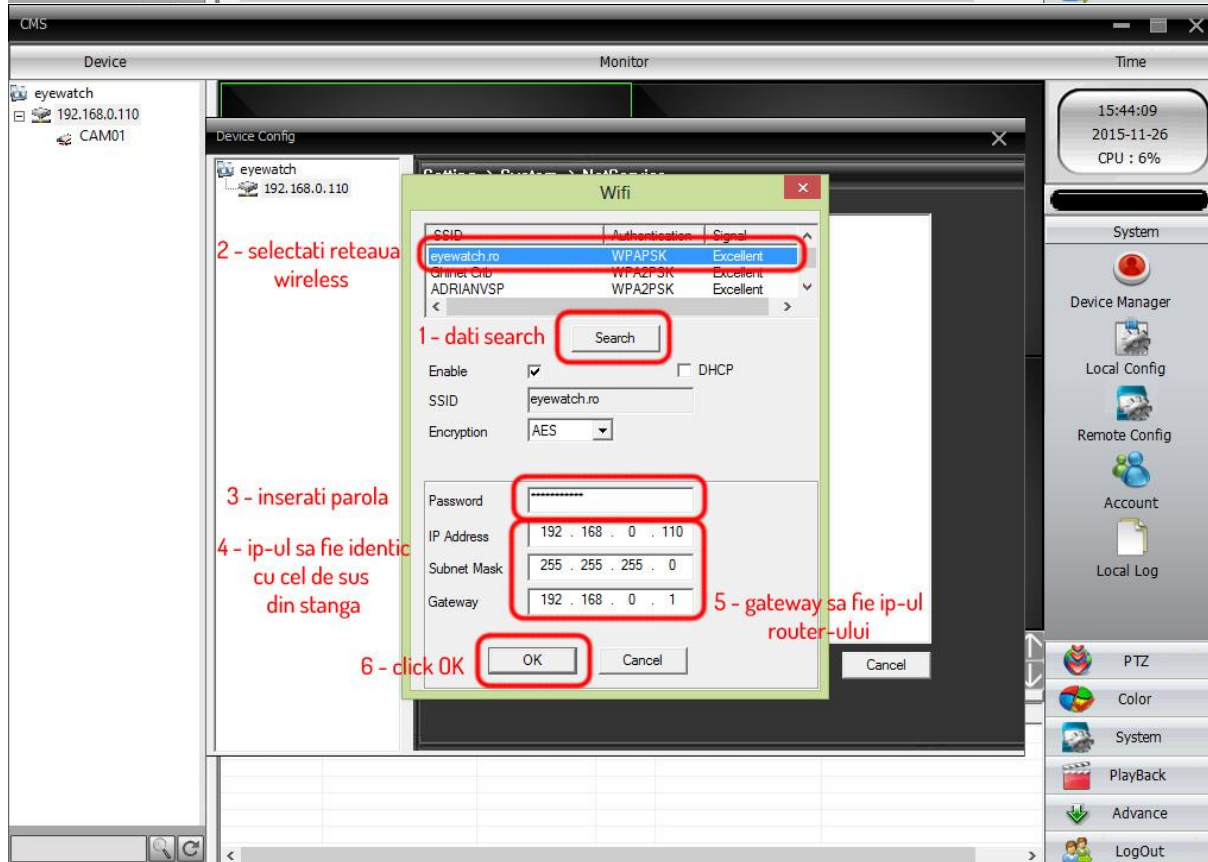
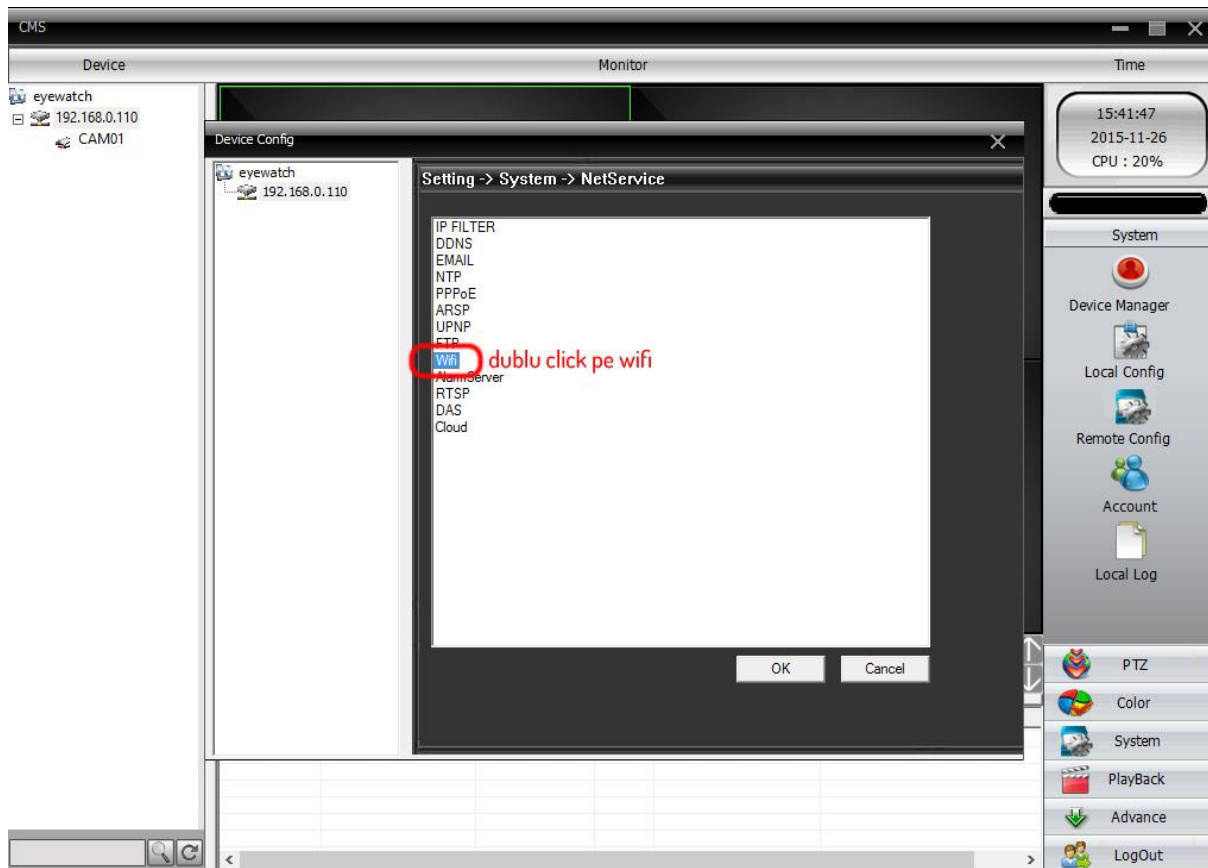
Setting -> System

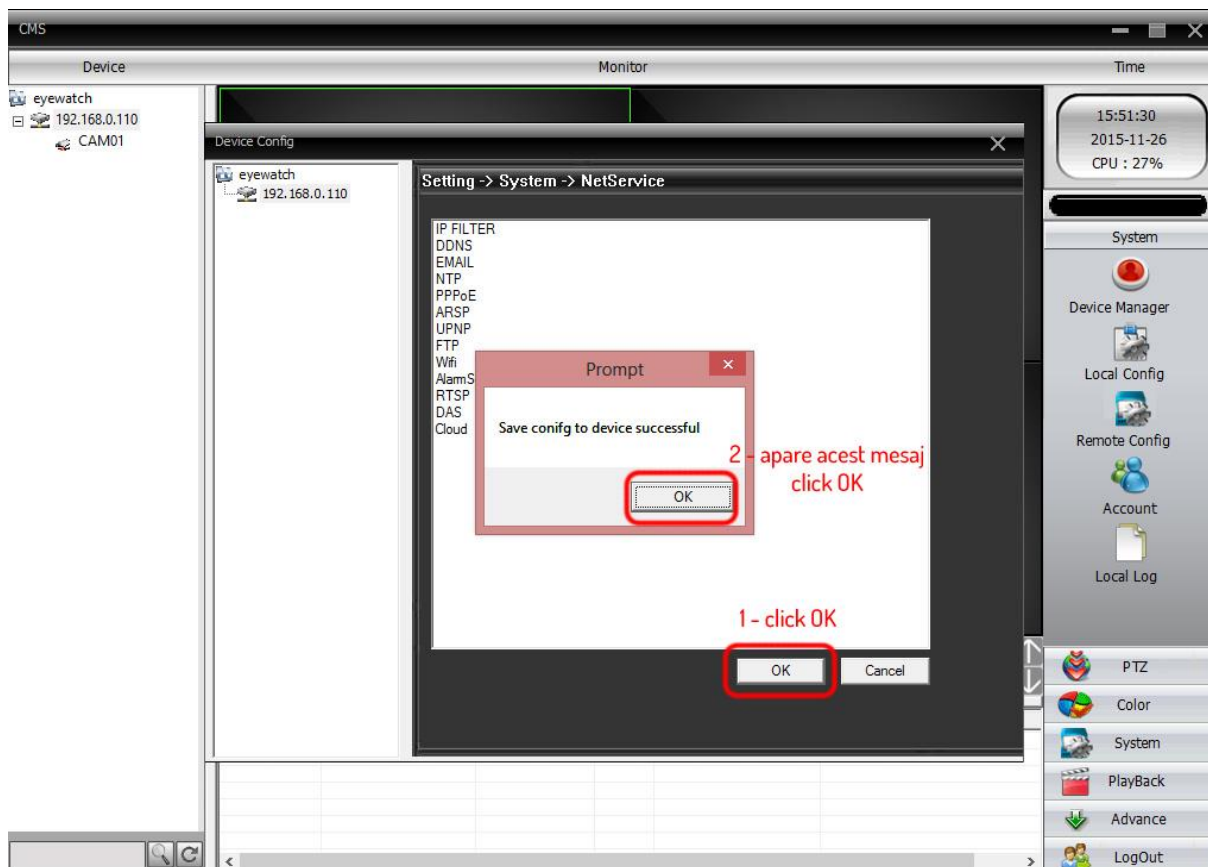
General Encode Network NetService

GUI Display PTZ Config RS232 Camera param.

click pe setari

apoi click pe "Net Service"





Dupa efectuarea setarilor de mai sus, puteti sa scoateti cablul de retea din camera. Aceasta trebuie sa functioneze wireless.